




Ketley Parish Council

NEWSLETTER

Winter 2024/Spring 2025 Edition

Ketley Parish Council are proud to announce that we are now members of the Care Leavers Covenant.

See more details on this here  and below



SIGN UP TO CONNECTS TODAY
Exclusive Opportunities for Care Leavers

Care leavers and support workers can sign up to Connects. We will keep you up to date with relevant work, education and recreational opportunities, as well as information about the support that care leavers may be able to access. In addition to this, care leavers will be automatically entered into our give-aways!

Your benefits:

- ✓ It's completely free.
- ✓ Financial Support.
- ✓ Job Opportunities.
- ✓ Work Experience.
- ✓ Exclusive Giveaways.

To register, you must be:

- A Care Leaver aged 16 - 25.
- Or a Support Worker.
- Living in England.

Talk to us! 0800 - 070327 info@mycovenant.org.uk <https://www.facebook.com/careleavercovenant>

Who's behind the Care Leaver Covenant?

The Care Leaver Covenant is a Department for Education (DfE) programme delivered by Spectra, a social impact agency based in Wolverhampton. It is supported by a Business Council and Advisory Board and overseen by an inter-departmental Ministerial Board.

INTRODUCING THE CARE LEAVERS COVENANT

We work with more than 700 organisations across the country to connect care leavers with exclusive opportunities in education, work, wellbeing, money and their home.

10,000 young people leave the care system every year. Larger councils continue to support care leavers up to the age of 25, but this community needs wider society to play its part as they do not have access to the skills, resources, networks and levels of confidence from which other young people benefit.

The Care Leaver Covenant is a pledge from an organisation in the private, public or voluntary sectors to provide support for care leavers aged 16-25 to help them take their next steps.

Organisations create 'offers' which might include:

- one-to-one mentoring, pastoral support or career/employment guidance
- work experience placements, internships, traineeships and apprenticeships
- concessionary access to sport, leisure and cultural activities
- financial guidance
- discounted retail offers.

Connects

Connects is our dedicated platform for care leavers and support workers. It provides exclusive access to opportunities from our network. Over 3,000 people are registered with Connects who are kept up-to-date with opportunities and offers.

Network

Our network includes companies from Amazon to ITV; from Superdrug to Sky to councils, colleges, universities and a major partnership with NHS England as well as many charities and voluntary organisations.

Ketley Parish Council is keen to play its role in supporting this important programme and will be working collaboratively with colleagues in neighbouring parishes to offer as much practical support as we can.

We will be raising awareness among our parishioners and asking them to think about the offers that could be made including within the businesses they own or work within. We will also be encouraging care leavers living in our community to take advantage of all available offers.

Connect with the Care Leaver Covenant:
E: info@mycovenant.org.uk | W: [mycovenant.org.uk](https://www.mycovenant.org.uk)

A message from your Chair, Councillor Eileen Callear:

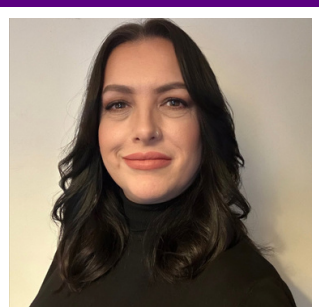
Dear resident,

We had a great end to 2024 with Christmas parties and over 65's Christmas dinners, but now we are looking forward to kicking off 2025 with lots of exciting plans for the coming months.

We recently met in Resources and Events Committee and agreed to run our Summer Coach Trip to Llandudno again in August, as well as a big new event planned on Ketley Playing Fields - which is being arranged - with more details to follow.

We also have exciting news regarding new solar panels being installed at Ketley Community Centre. This project will not only help us be more climate friendly, but it will also help us cut running costs at the centre on an ongoing basis.

There's lots more to come, but if you think we are missing something, or have a bright idea that you think the council should consider - please get in touch. We'd love to hear from you.



Cllr. Eileen Callear
Chair of Ketley Parish Council

FRIENDS OF KETLEY PADDOCK MOUND - BRIEF UPDATE

Despite periods of dreadful weather the PALS have managed to keep maintenance going around the Mound.

We have been missing the support of Jason (CAT team). We wish him well and hope he will be back soon.

It's been a long-held wish to reduce the tall tree growth on the steep bank behind the Round Pool at Red Lees, to increase the sight lines/views from the top of the Mound.

It would also let more light on to the bank and increase biodiversity.

Telford & Wrekin's Tree Officer has identified and marked some trees for removal. We are hoping that tree felling will place before the Spring of this year.

The PALS meet on the first and third Thursday of the month 10:00-12:00 (weather permitting). New helpers always welcome.

Find us on Facebook or at ketleypaddockmound.org



Ketley Coffee Club (over 50's) meet the second and fourth Thursday of each month 1 pm – 3 pm. Various activities, speakers, and the occasional trip out. Tea/Coffee and biscuits is served each session. New members welcome.



The Committee of Ketley Good Companions holding a coffee evening on September 29, 1975

Ketley Good Companions would openly welcome new members to their Club which meets on Wednesday mornings – 10.30 am to 12.30 pm. Come and enjoy a cup of tea/coffee and of course biscuits – various activities take place.

KETLEY YOUTH CLUB

4 All FOUNDATION

KETLEY YOUTH CLUB

EVERY THURSDAY

NO NEED TO BOOK

3:45pm - 5:15pm

Ketley Community Centre
62 Holyhead Rd, Telford TF1 5AN

Ages 9-16

Activities will include
sports, arts/crafts, game consoles, pool, darts
and more!

YOUTH OFFER

PLEASE CONTACT US FOR FURTHER INFORMATION
WWW.4ALL.FOUNDATION INFO@4ALL.FOUNDATION 0800 321 3617

Ketley Youth Club has been a huge success since starting up in January 2025. We have seen children participating in Nerf wars, making their own fruit kebab, playing darts like Luke Littler, smashing video games, and fencing like pros, to name just a small amount of the activities! Ketley Parish Council would like to thank George and his colleagues at the 4 All Foundation for this amazing provision that together, we have been able to provide to the younger generation of Ketley residents. If you are aged between 9 and 16 and haven't checked it out yet, come along* and have a blast with us!

*Youth Club runs during term time only

KETLEY CAT

As you may have seen, we have had some new faces working within the Parish - Declan and Brian stepped up and into Jason's shoes whilst he was off work. They have taken the work in their stride, and I'm sure all residents can agree how much of a fabulous job they have done in the last few months! Whilst we are so grateful for all the hard work achieved by Declan and Brian, we are so lucky to see Jason back, working on a phased return to begin with whilst he gets back on his feet after the extended leave of absence. Brian will be continuing to work alongside Jason, and we may even see Declan back on the odd occasion! Thank you Ketley CAT, we appreciate all you do for the Parish!



Declan Noel (L) & Brian Farmer (R)



Jason Hanley

2025 PROM POP - UP EVENT!



PROM Pop-Up

We are now taking donations of pre-loved & new ballgowns, suits, shoes & bags for our Prom Pop-Up Events across Telford.

Prom pop-up gives young people the opportunity to choose a free outfit to wear to their Prom.

If you are able to donate please drop them off at Jubilee House Madeley.

Thank You



PROM Pop-Up

Pre-loved Ball Gowns & Suits
Drop-in and choose your free Prom outfit

18 March 3:30-6:30pm - The Hub, Newport
31 March 3:30-7:30pm - The Wakes, Oakengates
3 April 3:30-8pm - Sambrook Centre, Stirchley
5 April 9am-12:30pm - Sambrook Centre, Stirchley
10 April 3:30-6:30pm - The Hub on the Hill, Sutton Hill
17 April 3:30-6:30pm - Lightmoor Community Centre
22 April 1-4pm - Lawley Community Centre
25 April 12-4pm - Arleston Community Centre
1 May 3:30-6:30pm - Ketley Community Centre
8 May 3:30-6:30pm - Brookside Central
12 May 4-6pm - Leegomery Community Centre
13 May 4-6pm - Hadley Community Centre
16 May 3:30-6:30pm - Turreff Hall, Donnington
23 May 3:30-6:30pm - St Georges Primary School
28 May 1-3pm - The Park Lane Centre, Woodside
30 May 1-4pm - Dawley Town Hall

We are also taking donations of ball gowns, suits, shoes & bags to support this event, please drop off at Jubilee House Madeley

After the amazing response that we received last year, Ketley Parish Council are again participating in the Prom Pop-Up Event, led by Madeley Town Council.

The event will be held at Ketley Community Centre, and this year we hope to make it bigger, better, and hopefully make some more dreams come true by helping you to find your dream dress and/or suit!

So if you are due to attend your Prom in 2025, whether it be year 6, year 11, or year 13 - head over to Ketley Community Centre on Thursday 1 May between 3:30 PM and 6 PM.

If you would like to donate any dresses, shoes, suits, ties, bags, or accessories, these can be dropped off at Jubilee House in Madeley.

However, if you would like to drop these into Ketley Community Centre, we will be able to get these across to Jubilee House on your behalf!

We can't wait to see you there!

Important Numbers at Telford & Wrekin Council:

General Enquiries	01952 380000
Adult Social Care	01952 459252
Anti-Social Behaviour	01952 384384
Benefits	01952 383838
Housing Options	01952 381925
Bins & Recycling	01952 384384
Council Tax	01952 383838
Environmental Health	01952 381818
Highways (streets & roads)	01952 384000
Planning	01952 380380
Registry Office	01952 382444
Safeguarding (Adults)	01952 385667
Safeguarding (Children)	01952 385385 (01952 676500)
Trees, Hedges & Woodland	01952 384384 (08451 559955)

KETLEY CALENDAR - DATES OF IMPORTANCE TO ADD TO YOUR DIARY

Ketley Parish Council are working hard to ensure that we have lots of events in the diary for 2025 - here are a few to add to yours so you don't miss out!

Week commencing Monday 17 February 2025
Solar Panel Install at Ketley Community Centre

Monday 14 April - Friday 25 April 2025
Easter Fun! Including the annual Easter Egg Hunt!

Thursday 01 May 2025
Marking VE Day's 80 Anniversary with Paddock Mound - Lighting of the Beacon

Saturday 03 May 2025
VE Day Tea Party at Ketley Community Centre

Saturday 19 July 2025
Ketley's Summer Community Day

Thursday 14 August 2025
Residents Coach Trip to Llandudno

Friday 31 October 2025
Kids Halloween Party

Wednesday 17, Thursday 18, and Friday 19 December 2025
Over 65's Christmas Dinners

Saturday 20 December 2025
Kids Christmas Party

There will be more information on all of the events listed above in the coming newsletters, posted on Social Media, and discussed in our public meetings. If you would like any additional information, please don't hesitate to get in touch with the Parish Council and Community Centre staffing teams.

How to Contact your Councillors

Cllr. Eileen Callear
cllr.eileencallear@ketleyparishcouncil.gov.uk

Cllr. Hilda Rhodes
cllr.hilda.rhodes@ketleyparishcouncil.gov.uk

Cllr. Dave Elliott
cllr.daveelliott@ketleyparishcouncil.gov.uk

Cllr. Maggie Evans
cllr.maggieevans@ketleyparishcouncil.gov.uk

Cllr. Joy Francis
cllr.joyfrancis@ketleyparishcouncil.gov.uk

Cllr. Nick Heath
cllr.nickheath@ketleyparishcouncil.gov.uk

Cllr. Amrik Jhavar
cllr.amrikjhavar@ketleyparishcouncil.gov.uk

Cllr. Sam Millward Thomas
cllr.sammillwardthomas@ketleyparishcouncil.gov.uk

Cllr. Ranbir Sahota
cllr.ranbirsahota@ketleyparishcouncil.gov.uk

Cllr. Sukh Thiara
cllr.sukhthiara@ketleyparishcouncil.gov.uk



Cllr. Eileen Callear
Chair
Ketley Ward



Cllr. Hilda Rhodes
Vice Chair
Ketley Ward



Cllr. Dave Elliott
Ketley Ward



Cllr. Maggie Evans
Beveley Ward



Cllr. Joy Francis
Ketley Ward



Cllr. Nick Heath
Beveley Ward



Cllr. Amrik Jhawar
Ketley Ward



Cllr. Sam Millward Thomas
Beveley Ward



Cllr. Ranbir Sahota
Telford & Wrekin Council Borough Councillor
Ketley Ward



Cllr. Sukh Thiara
Ketley Ward



COUNCILLOR VACANCY
Ketley Ward



Clerk to the Council
Shelley Anthony

Council Meetings



Meetings of the Council are held in the Community Centre on the second Wednesday of the month at 7 PM, excluding August. Members of the public, both parish and non-parish residents, are welcome to attend these meetings. All details of these meetings can be found on the Council's website.

Parish Council Information

Address

Ketley Parish Council
Ketley Community Centre
Holyhead Road
Ketley
Telford
TF1 5AN

Postcode

Landline*

Mobile*

Clerk Email

Deputy Clerk Email

Council Website

Office Hours**

01952 404434

07563 389440 / 07950 475482

parishclerk@ketleyparishcouncil.gov.uk

deputyclerk@ketleyparishcouncil.gov.uk

www.ketleyparishcouncil.gov.uk

Monday - Thursday: 9:00 AM - 5:00 PM

Friday: 9:00 AM - 4:00 PM

*Phones will only be answered during office hours

**The office is closed on weekends and Bank Holidays, these hours can differ